

MONTHLY MEMBERSHIP PROGRESS REPORT

District 3233E1

Results as of: 6/30/2025

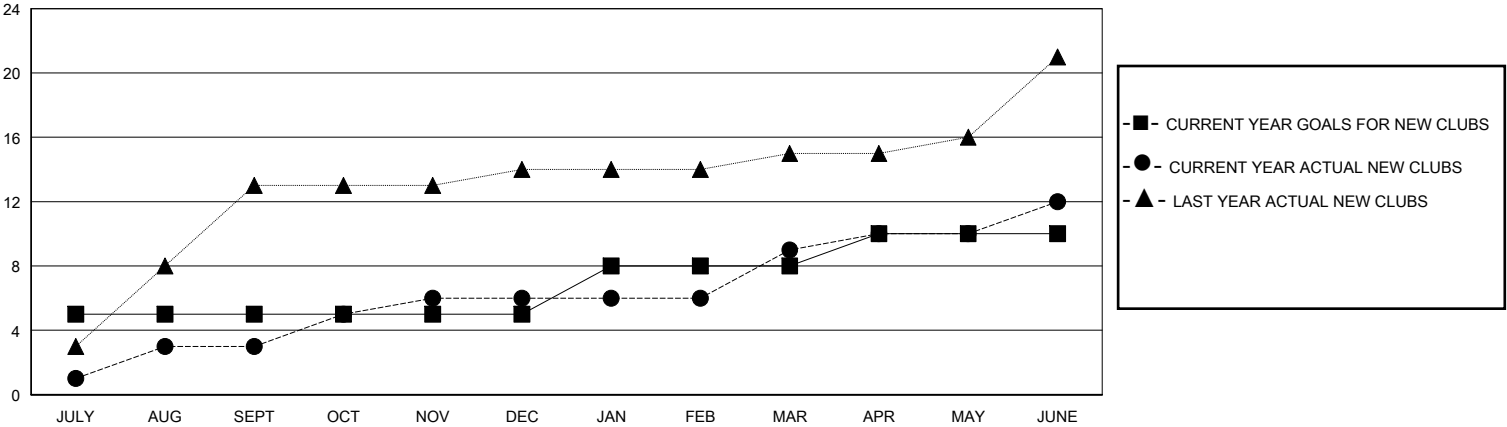
GMT:

LOCATION INDIA

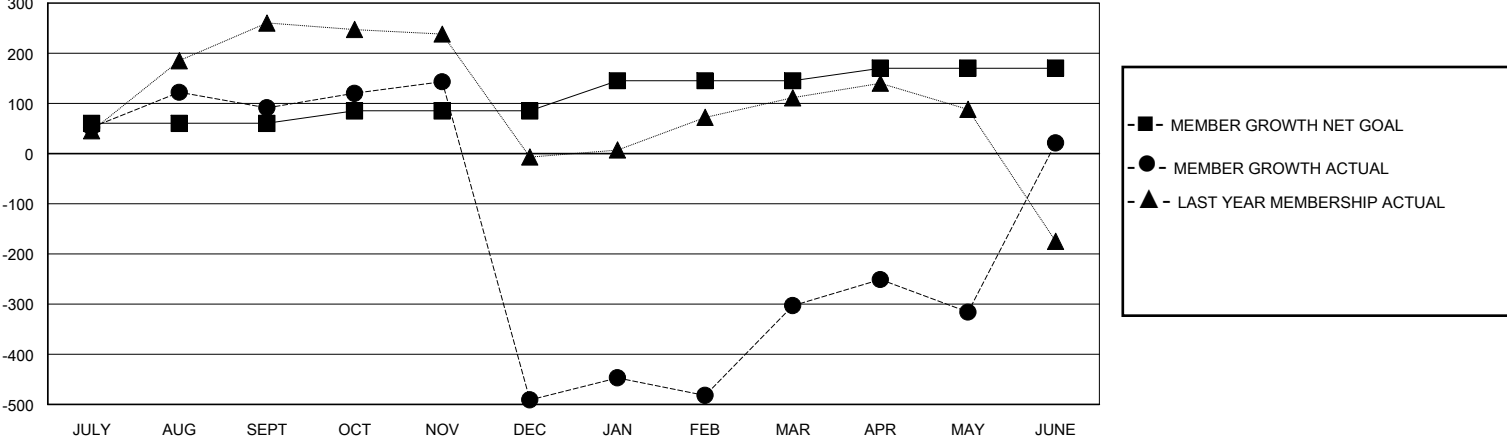
GMT CA

| Clubs | | | | Members | | | |
|-----------------------|---------------|-----------|---------------|-----------------------|------------------------|----------------------|--|
| RESULTS FOR 2024-2025 | | | | RESULTS FOR 2024-2025 | | | |
| QUARTER | NEW CLUB GOAL | NEW CLUBS | DROPPED CLUBS | QUARTER | MEMBER GROWTH NET GOAL | MEMBER GROWTH ACTUAL | DROPPED MEMBERS ACTUAL (including transfers) |
| JULY/AUG/SEPT | 5 | 3 | 0 | JULY/AUG/SEPT | 60 | 229 | 121 |
| OCT/NOV/DEC | 0 | 3 | 38 | OCT/NOV/DEC | 25 | 148 | 724 |
| JAN/FEB/MAR | 3 | 3 | 1 | JAN/FEB/MAR | 60 | 498 | 109 |
| APR/MAY/JUNE | 2 | 3 | 5 | APR/MAY/JUNE | 25 | 1337 | 687 |

GOALS AND ACTUAL NEW CLUBS CUMULATIVE



GOALS AND ACTUAL MEMBERS CUMULATIVE



| | | | |
|-------------------|---|---------------------------------|----------------|
| DROPPED CLUBS: 44 | 115 CLUBS OF 232 ADDED 1 OR MORE NEW MEMBERS | GENDER DISTRIBUTION | |
| | | MALE | 4,405 (70.90%) |
| | | FEMALE | 1,807 (29.08%) |
| DROPPED MEMBERS | CLICK HERE FOR CUMULATIVE MEMBERSHIP DATA | TOTAL FAMILY UNIT MEMBERS | |
| DECEASED | | 1,036 | |
| CLUB CANCELLED | | FAMILY MEMBERS PAYING HALF DUES | |
| OTHER | | 605 | |
| TOTAL | | | |
| | | | |